

# RIDGE STONE

## HOMES

### CUSTOM HOME BUILDER

#### 6 AURA DRIVE, BLACKFALDS

MAIN FLOOR 732 SF

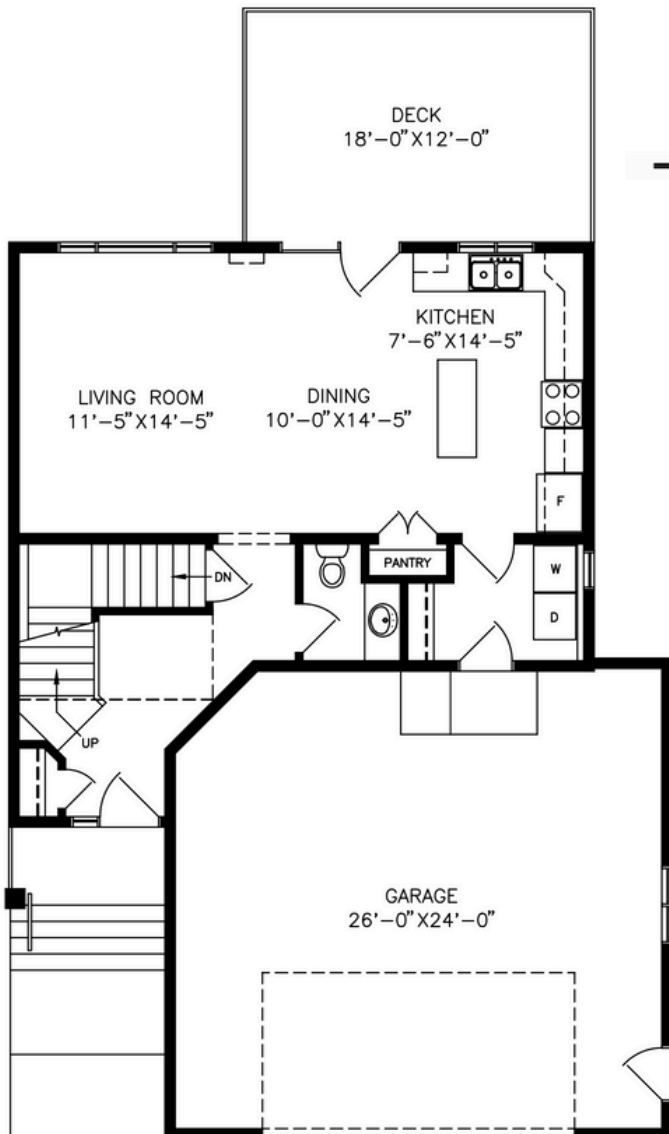
SECOND FLOOR 725 SF

WALKOUT BASEMENT 732 SF

TOTAL 2,189 SF

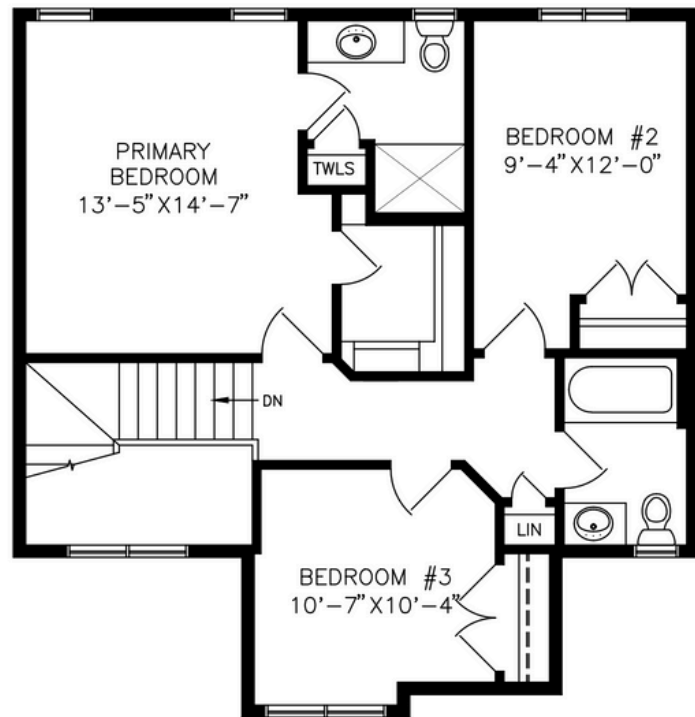
4 3.5 2

TOTAL INVESTMENT  
\$622,000.00



**MAIN FLOOR PLAN**

732 SF  
1457 SF TOTAL



**SECOND FLOOR PLAN** 725 SF



403-896-1825



INFO@RIDGESTONEHOMES.COM



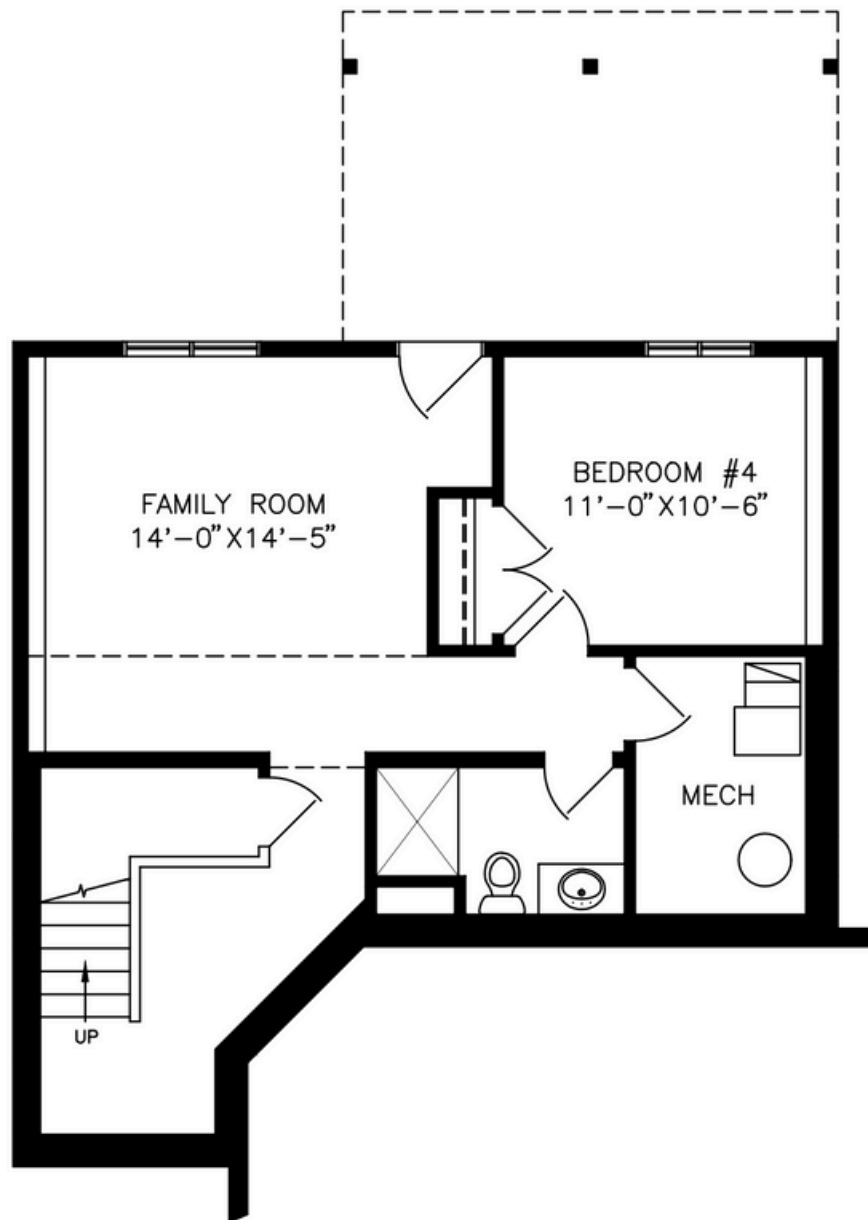
WWW.RIDGESTONEHOMES.COM

# RIDGE STONE

H O M E S

C U S T O M   H O M E   B U I L D E R

- Fully finished Two-storey home with a walkout basement
- Located in Aurora Heights, Blackfalds
- 2 car heated garage
- 4 bedrooms
- 3 full bathrooms plus a half bath on the main floor
- Granite countertops
- Maple and hickory custom cabinetry
- Stainless steel kitchen appliances and front loading washer & dryer included
- Custom wainscotting features
- Open concept main floor
- Modern craftsman exterior
- Landscaped



**LOWER FLOOR PLAN** 732 SF

