



**The Stone Ridge**  
**25 Meadow Close Feature Sheet**  
**\$599,000.00**

- ✓ 1560 SQ Ft. Bungalow with fully developed walk out basement
- ✓ 28 x 24 heated garage with upgraded LED lighting
- ✓ Exterior acrylic stucco and cultured stone
- ✓ 50-year fiberglass shingles
- ✓ Wicker PVC windows with high efficiency argon
- ✓ Exterior aluminum railing front and rear deck
- ✓ Large partially covered deck with gas line hook up for BBQ, and duradeck
- ✓ Stamped concrete driveway
- ✓ Open concept main floor
- ✓ Custom coffered ceiling
- ✓ Real stone fireplace
- ✓ Spacious Kitchen with custom maple cabinetry
- ✓ Stainless steel appliances
- ✓ Marble backsplash in kitchen with granite countertops
- ✓ Glass tile backsplash in bathrooms with Quartz countertops
- ✓ Custom maple and glass railing
- ✓ Solid maple hardwood flooring
- ✓ Luxury vinyl tile in bathrooms and kitchen
- ✓ Built in entertainment unit in living room
- ✓ Custom ceiling accent and wainscoting in entryway
- ✓ Spacious upstairs bedroom
- ✓ Pocket office on mainfloor
- ✓ Lockers in mudroom/ laundry room with washer dryer
- ✓ Large master bedroom with custom ceiling accent
- ✓ Custom master bedroom closet with built in drawers and shelving
- ✓ Ensuite with double vanity, large soaker tub, custom tile shower
- ✓ Walk out style basement with large windows and access to backyard
- ✓ Upgraded built in bar with maple cabinetry and granite countertops
- ✓ Glass french door wine and beer fridge
- ✓ Two spacious bedrooms
- ✓ 3 piece basement bathroom
- ✓ Plenty of storage

# TRIDGE STONE

H O M E S

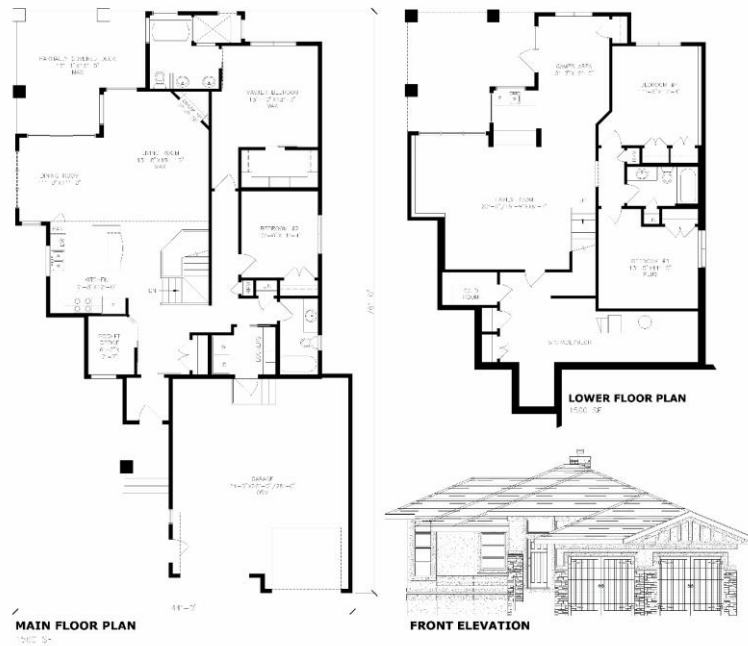
CUSTOM HOME BUILDER

- ✓ Large living room with games area
- ✓ Heated underfloor
- ✓ Central vacuum
- ✓ 10 Year Progressive New Home Warranty
- ✓ Fully Landscaped
- ✓ Stamped concrete patio
- ✓ Large pie shaped lot
- ✓ A/C
- ✓ Upgraded blinds package with blackout blinds in all bedrooms

# TRIDGE STONE

H O M E S

CUSTOM HOME BUILDER



**1560 SF** **4 BEDROOMS**  
**3 BATHROOMS**